

Risk Factor Control, Cardiovascular Outcomes, and Finerenone in Type 2 Diabetes and Chronic Kidney Disease: FIDELIO-DKD and FIGARO-DKD Trials

Sara Siqueira, MD¹; John W Ostrominski, MD¹; Brian L Claggett, PhD¹; Rajiv Agarwal, MD MS²; Gerasimos Filippatos, MD³; Bertram Pitt, MD⁴; Stefan D. Anker, MD⁵; Luis M. Ruilope, MD⁶; Meike Brinker, MD⁷; Patrick Schloemer, PhD⁸; Katja Rohwedder, MD⁹; Scott D. Solomon, MD¹; Muthiah Vaduganathan, MD MPH¹; Peter Rossing, MD¹⁰

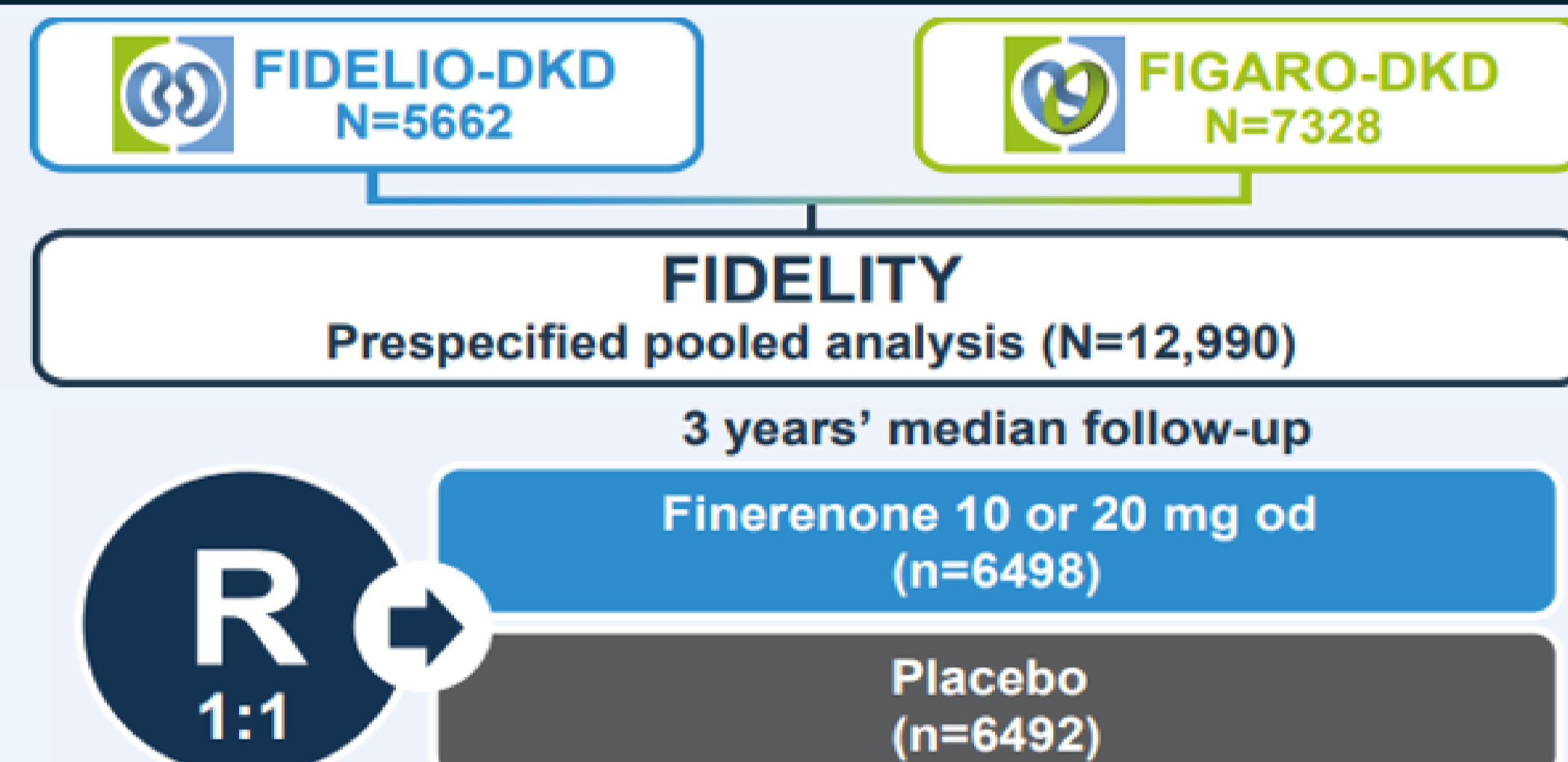
¹Cardiovascular Division, Brigham And Women's Hospital, Harvard Medical School, Boston, Massachusetts, USA; ²Indiana University School of Medicine, Indianapolis, Indiana, USA; ³National and Kapodistrian University of Athens, School of Medicine, Attikon University Hospital, Athens, Greece; ⁴University of Michigan, Ann Arbor, Michigan, USA; ⁵Department of Cardiology (CVK) of German Heart Center Charité, German Centre for Cardiovascular Research (DZHK) Partner Site Berlin, Charité Universitätsmedizin, Berlin, Germany; ⁶Hospital 12 de Octubre, Madrid, Spain; ⁷Bayer AG, Research & Development, Pharmaceuticals, Wuppertal, Germany; ⁸Bayer AG, Research & Development, Pharmaceuticals, Berlin, Germany; ⁹Bayer AG, Global Medical Affairs, Berlin, Germany; ¹⁰Steno Diabetes Center Copenhagen and University of Copenhagen, Copenhagen, Denmark.

BACKGROUND AND AIMS

- Core risk factor control is a guideline-directed clinical priority in patients with chronic kidney disease (CKD) and type 2 diabetes (T2D), but how it impacts cardiovascular (CV) outcomes and modifies the benefits of risk-lowering therapies such as finerenone remains uncertain.
- We therefore examined these associations in the FIDELIO-DKD and FIGARO-DKD trials.

METHODS

Study Design



N, indicates the number of randomized participants without critical Good Clinical Practice violations

Post hoc analysis

Controlled Risk Factor Definition: (at baseline)

- non-current smoking;
- blood pressure (BP) <130/80 mmHg;
- Low-density lipoprotein cholesterol (LDL-C) <100 mg/dL (<55 mg/dL in patients with atherosclerotic cardiovascular disease [ASCVD]);
- Glycated hemoglobin (HbA1c) <7%;
- No obesity: body mass index (BMI) <30 kg/m² in non-Asian patients or <27.5 kg/m² in Asian patients.

Inclusion criteria: Patients with CKD and T2D with complete risk factors data at baseline:

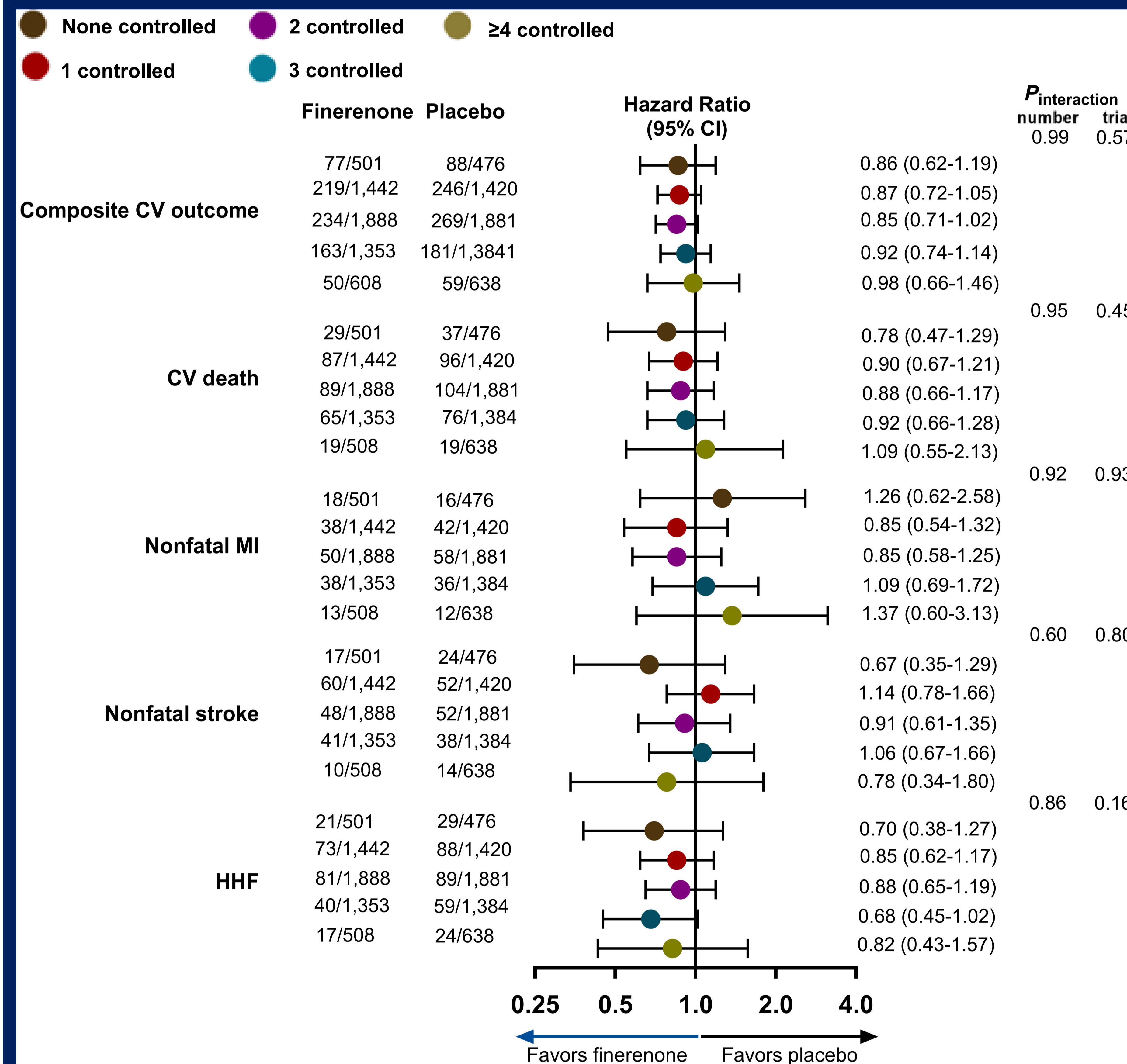
- Missing baseline data:**
- BP (n=5); LDL-C (n=1,354), BMI (n=61), Hb1ac (n=22);
 - Exclusions at the patient level (those with > 1 missing risk factor were not-double counted): N=1,399



Statistical analyses

- Incidence rates of composite CV outcome across risk-factor control groups;
- Cox proportional-hazards models estimated treatment effects, stratified by trial, geographic region, estimated glomerular filtration rate category, albuminuria category, and history of CV disease;
- Interaction testing assessed heterogeneity by number of controlled risk factors and by trial.

Effect of Finerenone on CV Outcomes by Number of Controlled Risk Factors



*Results were unchanged after competing-risk analysis.

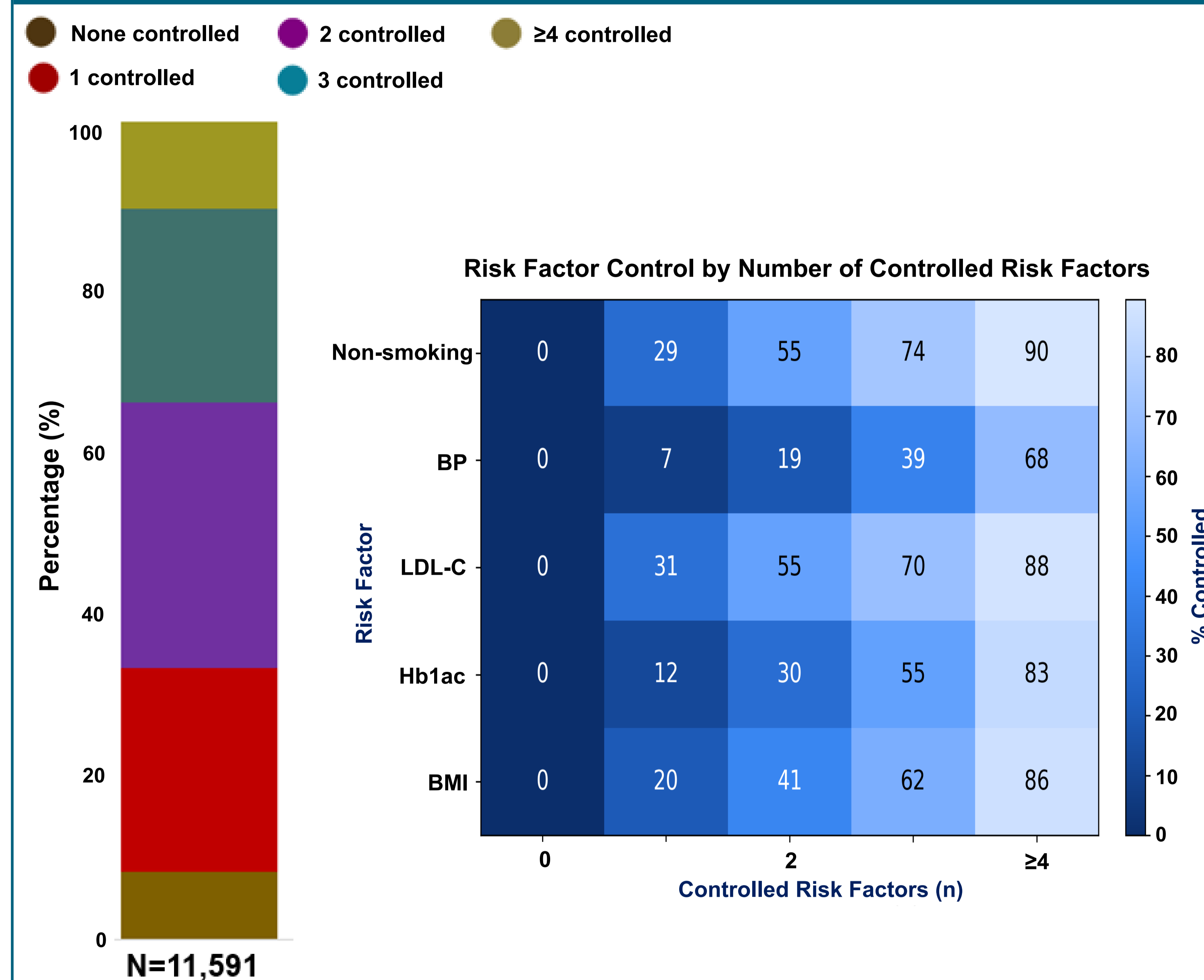
CONCLUSION

These findings highlight the importance of comprehensive risk factor control in diabetic kidney disease and demonstrate that finerenone reduces CV outcomes, including among patients with optimal risk-factor control.

FIDELIO-DKD and FIGARO-DKD trials were funded by Bayer.

ACC.26

Baseline Distribution and Controlled Risk Factors



Composite CV Outcome by Number of Controlled Risk Factors in the Placebo Arm

